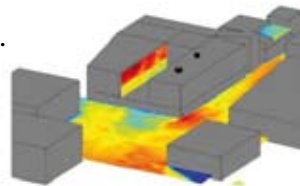
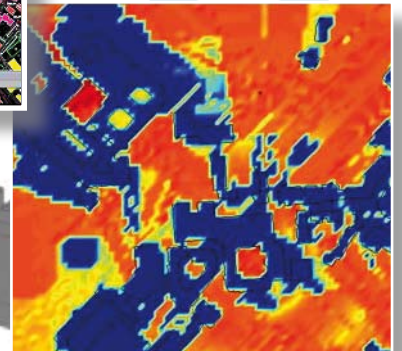


Electromagnetic pollution in town

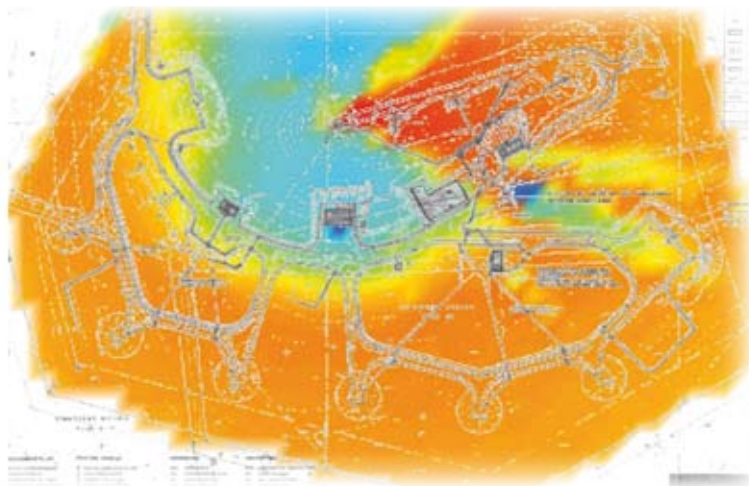
Mapping of the electromagnetic pollution

Cap Environnement and ANPI propose you a complete solution:

- Mapping of the electromagnetic radiation,
- Analysis of the impact of draft locations,
- Structured information of the public authorities for a constructive dialogue between the residents and the antenna operators:
 - . sources of electromagnetic fields,
 - . biological effects of fields,
 - . existing standards and recommendations in Europe.
- Checking of data provided by the operators.



Technical and legal aspects



The limitation of people exposure to electromagnetic fields is the subject of numerous recommendations, standards, decrees, orders and charts. The World Health Organisation (WHO) is striving to impose its recommendations throughout the world with great success. The proposed levels are nevertheless considered by a lot of people as not severe enough. Therefore, lots of national, regional and local initiatives in the EU aim a clearly higher precaution level. So the ratio between the less and most severe limits is of the order of 4500.

The service proposed by Cap Environnement and ANPI consists in the integration of radiocommunication antennas into a numeric map of the town (GIS). On the basis of the technical characteristics of the transmitters, the ambient electromagnetic level is simulated, taking account of the built environment and the landscape. All kinds of transmitters can be taken into consideration: GSM, UMTS, TETRA, radio, TV, radars, etc. The levels obtained can then be compared with the limits to apply.

It is both a management tool of the electromagnetic pollution and a dialogue tool between the public, the public authorities and the antenna operators.